

User Manual



NAVITEL RS985 GPS

Advanced smart dashcam

NAVITEL



CZ

DE

EE

EN

HU

LT

LV

PL

RO

RU

SK

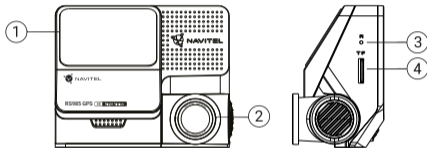
UA

Introduction

Dear Customer!

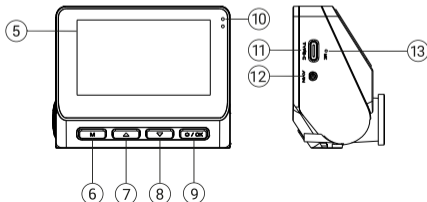
Thank you for purchasing this NAVITEL® product.

NAVITEL RS985 GPS is a multifunctional high-definition DVR with many functions and features that are described in this User Manual. Please read the manual carefully before using the device and keep it for future reference.



Device layout

- | | |
|---------------------|-------------------------------|
| 1. Windscreen mount | 8. Down button |
| 2. Lens | 9. Power/OK button |
| 3. Reset button | 10. LED indicators |
| 4. MicroSD slot | 11. USB-C port |
| 5. Display | 12. Rear camera port (CAM-IN) |
| 6. Menu button | 13. Microphone |
| 7. Up button | |



Package contents

- DVR NAVITEL RS985 GPS
- Car charger 12/24 V
- Rear camera
- USB-C - USB-A cable
- Video cable for the rear camera
- User manual
- Warranty card
- Gift voucher
- Electrostatic film - 2 pcs.

Specifications

Main camera	Camera sensor	SONY IMX415 STARVIS
	Video resolution	2160p (4K), 1440p (2K), 1080p (Full HD)
	View angle	160°
	Lens	7 layers
Rear camera	Camera sensor	GC2053
	Video resolution	1080p (Full HD)
	View angle	120°
Processor		NT98529
Display		3", 480 x 854 IPS
Recording format		MOV
MicroSD card capacity		Max. 512 GB
Charging port		USB-C

CAM-IN	micro-jack (2.5 mm)
Battery	3.7 V, 500 mAh
Power	5 V, 2 A
Wi-Fi	802.11 b/g/n
GPS-alert	cameras / warnings / speed
G-sensor	Yes
HDR	Yes
Driver assistants ADAS+BSD	distance control / marking intersection control / movement start control / rear-end collision risk control / blind spot control
Language*	French, Spanish, German, Polish, Slovak, English, Russian, Italian, Czech, Hungarian

Note: contents, appearance, and technical specifications that do not change the overall functionality of the device may be changed by the manufacturer without prior notice.

*New language packs can be added in the future firmware updates.

NAVITEL s.r.o. hereby declares that the device NAVITEL RS985 GPS is compatible with the European directive RED 2014/53/EU. The full text of Declaration of conformity is available at the following internet address: https://www.navitel.com/declaration_of_conformity

Installation

1. Put the microSD card (sold separately) into the DVR. Use a high-speed SD card (Class U3 or above); capacity should be up to 512 Gb.



- To avoid malfunctions of the DVR and / or SD-card, don't insert and remove SD-card during DVR operation.
- Before using a microSD card, please format it inside the DVR to avoid data errors. For formatting the SD-card in Menu mode select Format SD-card and confirm it.

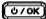



2. Secure the device on the windshield using the mount.
3. Connect the car charger to the cigarette lighter socket.
4. Connect the car charger to the DVR input (USB-C).
5. Turn the power on; the DVR will start up and begin recording automatically.
6. Adjust the DVR position.

EN

Precautions

- The built-in battery is designed only for recording an emergency event in parking mode and turning off the device correctly when the power is turned off; for the full operation of the device in any mode, a constant power connection is required.
- Use only the original charger adapter. Using another adapter may negatively affect the device's battery. Use accessories only approved by manufacturer.
- Permissible ambient temperature in operating mode: -10 to +70 °C. Storage temperature: +5 to +45 °C. Relative humidity: 5% to 90% without condensation (25 °C).
- Put the device away from fire sources to avoid explosion or fire.
- Do not expose the device to physical impacts.
- Avoid contacting the device with sources of electromagnetic radiation.
- Keep the lens clean. Do not use chemicals or detergents to clean the product; always turn off the device before cleaning.
- Strictly follow the laws and regulatory acts of the region where the device is used. This device can not be used for illegal purposes.
- Do not disassemble or repair device by yourself. In case of device failure, contact the service center.

Buttons

Button	Functions
	Press the button shortly to turn the device on. Press and hold the button for 2 seconds to turn the device off. In Record mode (STBY), press the button to start recording; press again to stop recording. In Menu, press the button to select a menu item.
	In Record mode (STBY) press the button to enter Menu mode. In Menu press the button to switch to the next Menu category.
	In Menu, press to select the previous menu item. In Record mode press and hold the button for 2 seconds to take a picture.
	In Menu, press to select the next menu item. In Record mode press and hold the button for 2 seconds to switch between main and rear cameras.
Reset	If the device is not responding, press the button to reset.

For the convenience of working with the DVR's video files and embedded data, use **Navitel DVR Player**.

Download available at: <https://www.navitel.com/downloads/navitel-dvr-player>

Device functions

Format SD-card	Formatting a microSD card in the DVR is necessary for the correct operation of the device . Before using a microSD card or in case of data error, please format the microSD card. For formatting the SD-card in Menu mode select Format SD-card and confirm it.
Record	Connect the device to an external power supply and it will start recording automatically. Press the OK button to stop recording. Press the OK button again to record another video. Each video will be saved automatically.
Antiflicker	Adjusts your shutter speed to minimize the impact of flickering from artificial light sources. You can choose the current frequency in the Menu.
Loop recording	This feature allows you to save a video as a set of files given in the duration menu. If the memory card runs out of space, the unprotected files will be overwritten in the order in which they were created.
Power Off	Choose the period of inactivity after which the device will turn off automatically.
Stamp	You can add date and speed stamps to the recorded videos.
G-sensor	In case of a road incident, the DVR will automatically lock the current video. Protected files can not be deleted or overwritten. You can adjust sensitivity of a G-sensor in Menu.
GPS location	Device supports built-in GPS chipset and GPS antenna, it can show longitude, latitude and other information on your current location.
Select a view mode	Allows you to switch the camera view modes: front only; back only; split screen; back over front (picture-in-picture).
USB-connection	When connecting the device to a PC using a USB cable, two connection options will appear: 1) Mass Storage: play, copy and delete files. 2) Record: standard mode.

Parking mode*	Parking mode - impact control is based on the operation of the G-sensor: when it is triggered, an emergency file is written. Parking mode - continuous time-lapse recording records video continuously at a user-defined frame rate.
Advanced driver-assistance systems (ADAS+BSD)	The system monitors dangerous approach to an object, controls lane departure, warns about the beginning of movement of an object ahead and detects the appearance of pedestrians in front of the car. When the rear-view camera is connected, BSD (Blind Spot Detection) functions will also be activated. These functions are responsible for alerting the driver about the risk of a rear-end collision and the presence of other vehicles in the «blind spots» of the vehicle.
Mobile App support	You can watch and share videos and photos taken by DVR via the Navitel DVR Center application on your smartphone. Downloadable app connects your phone with the DVR through Wi-Fi network.
HDR	High Dynamic Range (HDR) allows you to record high contrast video while preserving all important details in the dark and light areas of the image. HDR mode only activates when recording at 30 frames per second (FPS).
Memory card speed test	The device will automatically perform a series of measurements of the write and read speed to the memory card to determine the efficiency of the memory card when used with the device. The detailed test result will be recorded in a text file.

Note: *The mode is available only when used with NAVITEL SMART BOX MAX, a device that prevents excessive battery discharge.

Navitel DVR Center app installation

1. Download and install Navitel DVR Center to your cell phone or tablet, follow your mobile device instructions. You can download application by scan QR code in DVR's Menu (App QR Code) with your cell phone. Choose Wifi in Settings menu, press On.
2. Turn on a Wi-Fi in DVR's Menu (Wi-Fi) and in your mobile device settings.
3. Run the app. Choose your DVR in the list. The DVR's information is in DVR's Menu (Wi-Fi Navitel).
4. Connect your mobile device to the DVR through Wi-Fi. If necessary use the password 12345678 or 1234567890. You can change it in DVR's Menu (Wi-Fi password).
5. Using the Navitel DVR Center you can:
 - update DVR's firmware;
 - control DVR functions in Settings menu: configure parking mode, impact sensor, video mode and format your SD card;
 - save, view, delete and send videos and photos as well as watch DVR's video in real time on the mobile device screen.

EN



Google Play



App Store



AppGallery

Digital Speed & Camera Info

The **Digital speed** feature is used to display time and vehicle speed calculated with the help of GPS signal and time. In this mode, the current speed [2] and time [3] are constantly displayed.

The **Camera info** feature notifies the driver about cameras and warnings (hereinafter – Cameras) along the way. When you turn on the **Camera info**, the current speed and time are displayed. With the approach to the nearest camera the following information is displayed:

- current speed [2],
- camera icon [4],
- dynamic progress bar indicating approach to the nearest camera [5],
- distance to the camera [6].

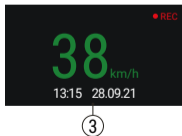
All information is displayed on a black screen.

In Record mode (REC), ●REC is displayed [1].

If the vehicle is still, 0 is displayed.

If there is no GPS-signal, --- is displayed.

Note. A weak GPS signal may be caused by bad weather conditions and other external factors. Please consult your vehicle speedometer.



Advanced driver-assistance systems (ADAS+BSD)

When the advanced driver assistance system is activated, the following functions are available:



1. tracking dangerous proximity to an object



2. lane departure control



EN



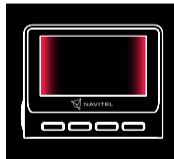
3. warning about the beginning of movement of an object ahead



4. message about pedestrians appearing in front of a car



5. danger of rear-end collision



6. blind spot control

Rear camera

With the help of rear camera you can get a high-resolution image behind your car for safe parking or recording while driving. Modern double recording technology allows saving recordings both in front and behind the car for fixing any unforeseen situation. The rear camera is also required for the Blind Spot Detection (BSD) assistant to monitor blind spots and the risk of rear collision.

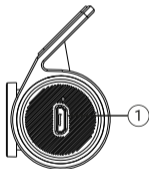
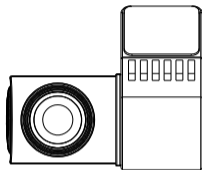
EN Rear camera installation

Install the camera on the rear window with a sticker, put the wire through the cabin, connect the wire to the rear camera port.

Note: It is strongly recommended that works on installing the camera should be done by qualified personnel with the necessary skills. Cable routing may require special tools or attachments. Make sure these works are safe.



The camera is not waterproof.



1. Video cable port